

Plug IEC Fused Snap In PE00073

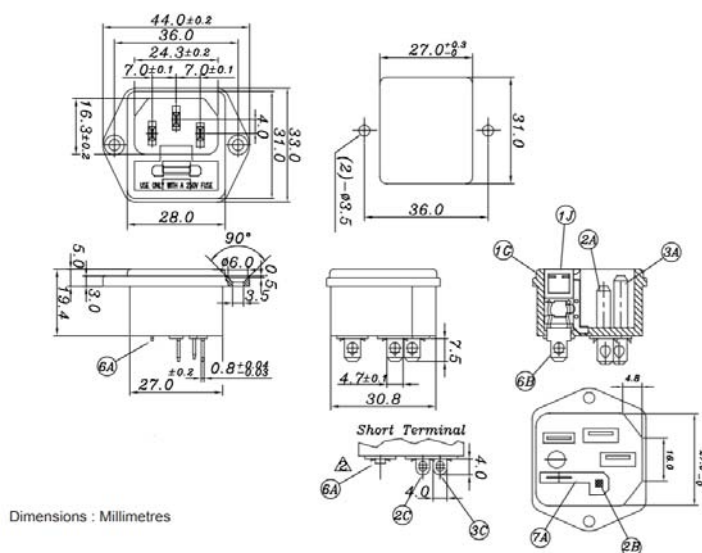
Product Type:
IEC CONNECTORS



Drawing:

Specification:

Rating: 6.3A/2.5W 250V AC
Withstand Voltage: 2,000V AC1 minute
Insulation Resistance: More than 100MΩ at 500V DC
Operating Temperature: -25°C to +85°C (Max.)
Gender: Plug
Voltage Rating: 250V AC
Connector Mounting: Panel Contact
Termination: Through Hole Vertical
Panel Cut-out Depth: 31mm
Panel Cutout Width: 27mm
Termination Method: Solder / Push-On



Code	Description	Pack Qty
PE00073	Plug IEC Fused Snap In	1