

## Earth Clamps

### Product Type:

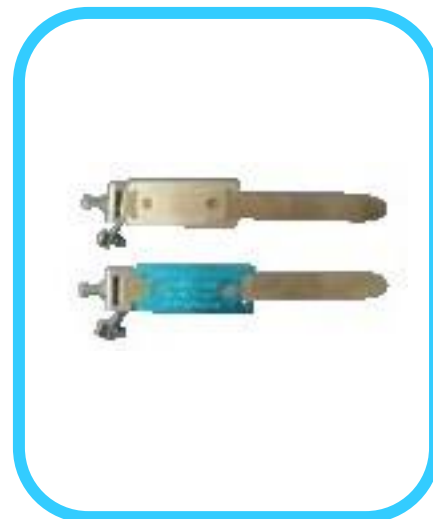
Earth Clamps (135mm)

### Standards:

Conforms to BS 951: 2009

### Application:

Earth Clamps can be attached to the pipes around your home for your safety. AEC 14 is ideal for use in dry, non corrosive atmospheres whilst AEC 15 can be used in all conditions, including moist atmospheres.



### Standard Type

Code	Description	Pack Qty
AEC 14	EC 14 Earth Clamp Dry	20
AEC 15	EC 15 Earth Clamp Wet/ Dry	20
AEC 16	EC 16 Earth Clamp Wet	20